

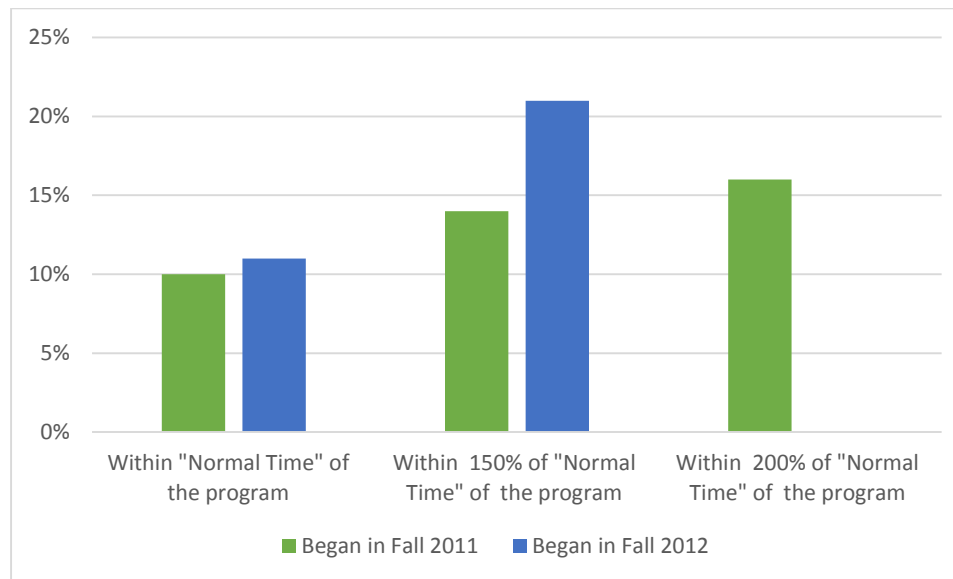
## OVERALL GRADUATION RATE AND TRANSFER-OUT RATE

The overall graduation rate is also known as the "Student Right to Know" or IPEDS graduation rate. It tracks the progress of students who began their studies as **full-time, first-time degree- or certificate-seeking students** to see if they complete a degree or other award such as a certificate within 150% of "normal time" for completing the program in which they are enrolled.

Note that not all students at the institution are tracked for these rates. Students who have already attended another postsecondary institution, or who began their studies on a part-time basis, are not tracked for this rate.

**At Central Alabama community College, 66 percent of entering students were counted as "full-time, first-time" in 2014.**

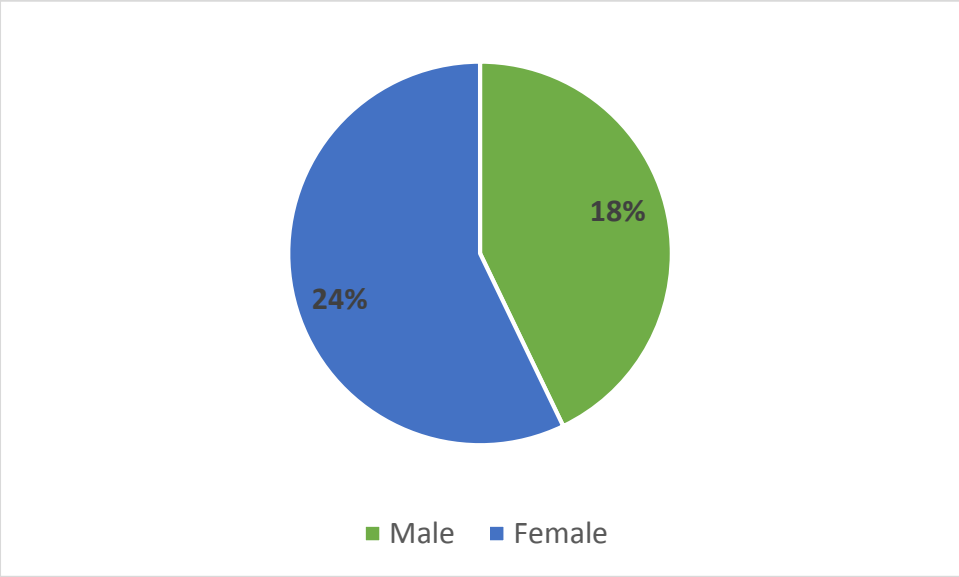
### GRADUATION RATES FOR STUDENTS WHO BEGAN THEIR PROGRAM IN FALL 2011 OR FALL 2012, BY TIME TO COMPLETION



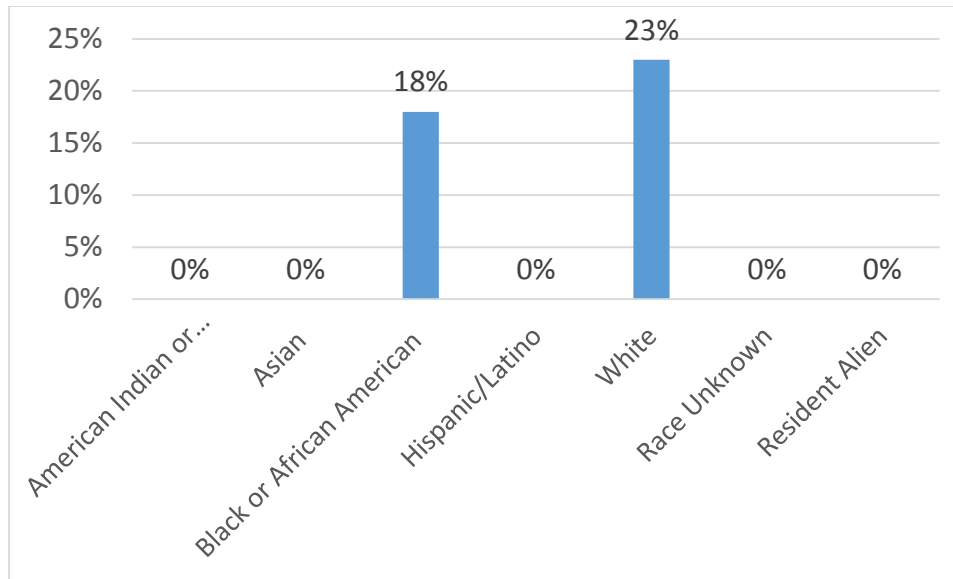
# Graduation Rates

Percentage of Full-time, First-time Students Who Began Their Studies in Fall 2012 and Graduated Within 150% of "Normal Time" to Completion for Their Program

By Gender



BY RACE/ETHNICITY



### Transfer Out Rates

Central Alabama Community College also reports transfer-out rate, which is the percentage of the full-time, first-time students who transferred to another institution. The transfer-out rates for students who began their studies in fall 2012 is 22%. Below is the Alabama Commission on Higher Education GAP Summarization of Central Alabama Community College students who transferred to Alabama 4 year institutions.

# ALABAMA COMMISSION ON HIGHER EDUCATION

## GPA Summarized by Alabama Public 2-Year Institutions

Summary of Cumulative GPA for Students Who Earned 60 hours or more from SU 2010 thru SP 2012 While Attending

SU 2010 thru SP 2012	Central Alabama Community College			CACC Total # of Students	Statewide Totals			Statewide Total # of Students
	Cumulative GPA				Cumulative GPA for all 2-Year Institutions			
4YR	<2	>=2<3	>=3		Total <2	Total >=2<3	Total >=3	
AAM					4	31	45	80
ASU								
ATSU	N/A	N/A	N/A	1	5	320	633	958
AU	5	35	25	65	57	317	215	589
AUM	1	15	16	32	7	67	84	158
JSU	1	4	8	13	46	160	162	368
TROY	5	5	15	25	200	282	447	929
UA		3	9	12	40	541	548	1,129
UAB	5	9	14	28	84	357	364	805
UAH	N/A	N/A	N/A	1	24	249	276	549
UM	1	8	11	20	8	81	87	176
UNA	N/A	N/A	N/A	2	36	110	170	316
USA	N/A	N/A	N/A	6	45	177	218	440
UWA					2	35	32	69
<b>Grand Total</b>	20	83	102	205	558	2,727	3,281	6,566



Source: Alabama Statewide Student Database

d:



Indicates number of students with a cumulative GPA less than 2.0.

Indicates number of students with a cumulative GPA greater than or equal to 2.0 and less than 3.0.

Indicates number of students with a cumulative GPA greater than or equal to 3.0.

Note: Totals include counts of all students, even if there were less than 10 students from each 2-year institution. "N/A" indicates that there were less than 10 students from that 2-year institution who transferred to this 4-year institution.

# ALABAMA COMMISSION ON HIGHER EDUCATION

## GPA Summarized by Alabama Public 2-Year Institutions

Summary of Cumulative GPA for Students Who Earned at least 24, but no more than 59 Credit Hours, from SU 2010 thru SP 2012 While Attending

SU 2010 thru SP 2012	CEN			CEN Total # of Students	Statewide Totals			Statewide Total # of Students
	Cumulative GPA				Cumulative GPA for all 2-Year Institutions			
4YR	<2	>=2<3	>=3		Total <2	Total >=2<3	Total >=3	
AAM	N/A	N/A	N/A	1	8	46	36	90
ASU								
ATSU					3	176	299	478
AU	3	33	18	54	137	624	427	1,188
AUM	3	21	15	39	16	91	63	170
JSU	N/A	N/A	N/A	4	26	48	28	102
TROY	10	11	15	36	311	395	440	1,146
UA	1	19	16	36	143	899	819	1,861
UAB	3	12	8	23	119	374	395	888
UAH	N/A	N/A	N/A	1	47	245	228	520
UM		5	9	14	10	137	130	277
UNA					46	154	185	385
USA	N/A	N/A	N/A	4	84	223	244	551
UWA	N/A	N/A	N/A	1	6	66	42	114
<b>Grand Total</b>	22	108	83	213	956	3,478	3,336	7,770



Source: Alabama Statewide Student Database



Indicates number of students with a cumulative GPA less than 2.0.

Indicates number of students with a cumulative GPA greater than or equal to 2.0 and less than 3.0.

Indicates number of students with a cumulative GPA greater than or equal to 3.0.

Note: Totals include counts of all students, even if there were less than 10 students from each 2-year institution. "N/A" indicates that there were less than 10 students from that 2-year institution who transferred to this 4-year institution.